



# VIEWPOINTS

*Fall 2013*

## President's Message

*By Alison Young, Board President*

Flathead Land Trust has had a very busy, exciting and successful year! The highlights of being awarded national accreditation, receiving a wildlife conservation award, and completing our 51<sup>st</sup> conservation easement, as well as other projects, are all reported in this newsletter. "Extra, extra, read all about it," as newsboys used to hawk.

Marilyn Wood, Flathead Land Trust's former executive director, left in June to move on to new challenges. I am currently the Interim Executive Director for the transition period before a new executive director is hired in 2014. But never fear - Flathead Land Trust continues to be the same viable and effective organization it has always been! Excellent conservation work is moving forward through a strong team approach by the staff and board.

A rewarding way to look at Flathead Land Trust's conservation work is by the value we contribute to the economy of the Valley. As reported in the Daily Interlake, tourists want clean air, clean rivers and lakes, wildlife and scenic vistas in Montana. Norma Nickerson, of the University of Montana's Institute of Tourism and Recreation Research, reports, "Travelers are happy with open space, so we have to be careful with what we change" and "destinations should remain unspoiled for future generations." She makes the point, "what visitors want when they come to Montana are the same reasons we live here." And this is why you, our supporters and partners, and I are involved with the Flathead Land Trust!



## Flathead Land Trust Earns National Recognition

Flathead Land Trust has been awarded national accreditation by the Land Trust Accreditation Commission after an extensive and rigorous evaluation. The Land Trust Accreditation Commission is an independent program of the Land Trust Alliance, the national umbrella organization of land trusts. Our accreditation status shows we meet the best standards in the nation for land trusts. Flathead Land Trust is one of 230 land trusts out of 1,700 land trusts nation-wide to receive recognition for meeting national standards of excellence for land protection.

***"We are excited and proud to have earned our accreditation status. It indicates to the public that Flathead Land Trust meets national standards for excellence, upholds the public trust, and ensures that conservation efforts are permanent. The seal of accreditation is a mark of distinction in land conservation" - Alison Young, Board President***



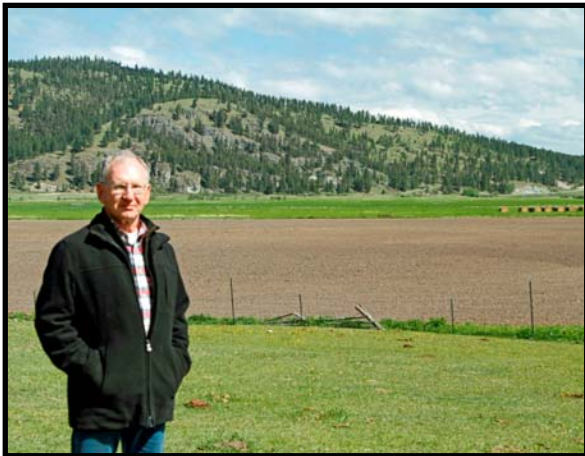
## Flathead Land Trust Receives Wildlife Conservation Award

Flathead Land Trust was selected as the 2013 recipient for the Wildlife Conservation Award from the Montana Chapter of The Wildlife Society. This award is given each year to an individual or non-governmental organization for past, present, or ongoing efforts that enhance wildlife conservation in Montana. Flathead Land Trust was nominated for the award by Montana Fish, Wildlife and Parks, the Natural Resources Conservation Service, Confederated Salish and Kootenai Tribes, the Flathead Lakers, and the Montana Association of Land Trusts.



## Migratory Birds Benefit from Smith Lake Project

A complex project in the Smith Valley was completed in March 2013 when 189 acres of wetlands were added to the Smith Lake Waterfowl Production Area. Flathead Land Trust facilitated the purchase of this foreclosed property with North American Wetland Conservation Act funding and transferred the property to the U.S. Fish and Wildlife Service. In addition, this project involved purchasing a conservation easement on an adjacent 116 acres of farmland owned by Pete Wade. The benefits of this project to migratory birds and other wildlife are invaluable.



## Herron Park Enlarged for Recreation

Flathead Land Trust assisted Flathead County and the non-profit group, Foy's to Blacktail Trails, in adding 50 acres to Herron Park in April 2013. When completed the multi-phase project begun by Foy's to Blacktail Trails in 2007 will have enlarged Herron Park from its original 120 acres to 440 acres. This project is part of a larger effort to allow for a permanent trail from Herron Park to Blacktail Mountain (pictured on right). The historic 13.5 mile route has been in use since 1938. This project will be appreciated forever by recreationists who hike, bike, and ride horses in the Flathead.



## Conservation Neighborhood Near Creston Expanded

Barbara Walden donated a conservation easement on her 7-acre property near Creston in December 2012. This project filled in a puzzle piece in a conservation neighborhood that includes 131 acres protected by two other conservation easements held by Flathead Land Trust. The project also helps protect a spring-fed pond (pictured on left) on the adjacent 77-acre U.S. Fish and Wildlife Service Creston Hatchery property. The Walden property protects a wildlife corridor connecting habitat used by many animals including grizzly bears.





## Bird Banding Research Project near McWeneger Slough

A bird banding research project is being conducted on a property near McWeneger Slough that has a Flathead Land Trust conservation easement. This spring and fall, landowner Dr. Pete Fisher, Dan Casey of the American Bird Conservancy, and Craig Hohenberger, a retired ornithologist, are banding songbirds to study their migration. They catch the birds during the first 5 hours of daylight with mist nets that are 10 feet tall and 15 feet wide. The 12 nets set in a riparian area along McWeneger Slough have captured 25 different species of birds from chickadees to sharp-shinned hawks, and even a long-eared owl. Pete said they expect to capture and band about 250 birds this year. The information they collect will go into a world-wide database used to learn about songbird migration, the importance of riparian areas for songbirds, and the effects of climate change on bird movement.



## Riparian Vegetation Restoration Underway along Flathead River

Riparian restoration is underway on properties owned by Jerry and Aileen Brosten and the Loudon family, both of which have Flathead Land Trust conservation easements. The riparian areas on both properties are being restored by planting trees and shrubs near the river. The new plants are protected from deer, voles, and competitive grasses with a variety of techniques including fencing, weed mat, mowing, and hot pepper that is taken up in the roots of the plants. The Flathead Lakers, Montana Fish, Wildlife and Parks, and the Natural Resource

Conservation Service have all contributed to the riparian restoration efforts. A new position was created by these partners, a River Steward, who is helping landowners to remove weeds, monitor plant growth, and assess the overall success of projects. The riparian restoration projects along the Flathead River recently received international attention. The International Mountain Section of the Society for Range Management toured some conservation projects along the Flathead River, including the Loudens' easement and riparian restoration. The International Mountain Section which has members from Alberta and Montana was interested in learning about the great conservation projects in the Flathead Valley that balance conservation and sustainable management of rangelands.

## Snags Created to Provide Bird Habitat near Creston

Bird habitat in the form of snags is being created on a property near Creston with a Flathead Land Trust conservation easement. Don Hauth, landowner, topped large diameter live trees to create snags in his forest (see photos on right). These topped trees will serve as important wildlife habitat. More than 100 species of birds and mammals use snags for nesting, roosting, shelter, and feeding. In fact, snags provide essential habitat for approximately one-quarter of all breeding birds in western coniferous forests.



Forest Habitat – No Snag



Forest Habitat with Snag

## Staff and Board Changes in 2012 and 2013

### Flathead Land Trust 2013 Board of Directors

**Alison Young**

*President and*

*Interim Executive Director*

**David Sandler, Secretary**

**Muffie Thomson, Treasurer**

**Don Hauth**

**Dean Sirucek**

**Edd Blackler**

**Richard Kuhl**

**Jeff Jones**

### Staff

**Ryan Hunter**

*Land Conservation Specialist*

**Laura Katzman**

*Land Conservation Specialist*

**Andreya Grozik**

*Office Manager*

### Community Advisors

**Ken Siderius**

**Dave McNutt**

**Don Murray**

**Jay T. Johnson**

**Bill Dakin**

**Mike Davis**

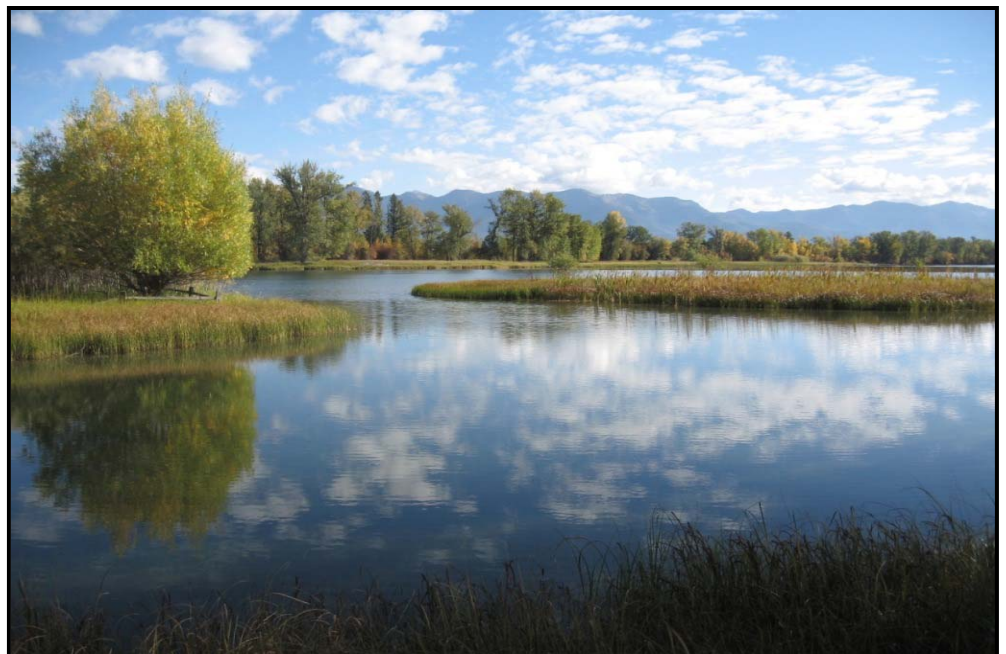
**Marilyn Wood** left Flathead Land Trust in June 2013 after six years as Executive Director and 2 years as Conservation Director. During Marilyn's time with Flathead Land Trust, the organization grew into a respected, effective non-profit which garnered many accolades for conserving private lands. She will be taking a well-deserved break to spend more time on horseback and seek out new challenges.

**Alison Young**, Board President, has graciously taken on the task of Interim Executive Director. We appreciate her help in this transition period and plan to hire a new executive director early in 2014.

**Dawn Tacke** was the Office Manager for five years through December 2012. Dawn did an amazing amount of work to keep the office and Flathead Land Trust operating efficiently. Her efforts during the accreditation process were invaluable. We appreciate all Dawn contributed to Flathead Land Trust and wish her the best of luck in her new position with the Montana Department of Natural Resources and Conservation.

**Andreya Grozik** became the new Office Manager in May 2013. She comes to Flathead Land Trust from a background in sales and management. Andreya earned a Bachelor of Science degree in Journalism from Bradley University. She relocated to the beautiful Flathead Valley from Chicago in 2012. After living in Bigfork and Florence as a child, no other place could ever compare.

**Susan Sherman** was on our Board of Directors for eight years serving as Board Secretary for six years through December 2012. Susan was committed and loyal in helping carry out the mission of Flathead Land Trust. We thank Sue for her dedication and years of service!



**David Sandler** joined the Board in January 2012 and has been the Board Secretary since January 2013. David was born and raised in Billings, graduated from the University of Montana School of Law, and has been practicing in Kalispell since 1999. He is currently a partner at Eddy and Sandler Trial Attorneys. David is married to a Kalispell native, Erika Johnson, and he and his wife have two children. He is an avid golfer and fly fisherman, coaches Miracle League Baseball and other youth sports and is a member and supporter of several local conservation organizations.

**Richard Kuhl** became a Board member in May 2012. Richard and his wife, Marylane Pannell, have lived in Kalispell for over 30 years. A retired high school math tutor, he spent 15 years working as a wilderness ranger and trail crew foreman in the Selway-Bitterroot Wilderness Area. Richard has been an officer and board member of a variety of local conservation organizations and remains committed to the conservation of the Flathead's land and water.

**Jeff Jones** joined the Board in May 2013. Jeff lives in Whitefish and has been in the Flathead Valley for 20 years. He has a Master's degree in Wildlife Resources from the University of Idaho and had a career as an ecologist and wildlife biologist with the U.S. Forest Service. Jeff likes to raft, ski, and hike and is excited to be helping protect the Flathead Valley's natural resources.

## Be Part of Flathead Valley's Legacy By Making a Bequest to Flathead Land Trust

Invest in the future of the quality of life in the Flathead Valley with a planned gift. You can be part of the legacy of our natural beauty, clean water, and special places by making a bequest to Flathead Land Trust. A bequest can be through your will, estate plan, trust, or life insurance policy and may be a specific amount of cash, stock, real estate, or a percentage of your estate. We recommend you talk to your financial advisor about the best option for you if you are interested in giving a gift that benefits your children and future generations, and sustains the outstanding way of life we enjoy today in the Flathead.

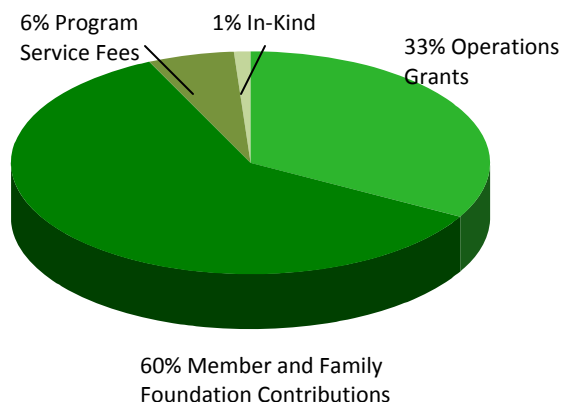
## FINANCIAL SUMMARY

(As of 12/31/2012)

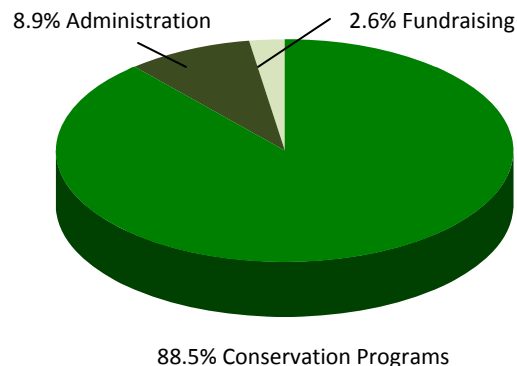
### Our Assets

<b>Cash for General Operations</b>	\$ 86,337
<b>Temporarily Restricted Funds</b>	
<b>Land Protection Assistance Fund</b> (Helps landowners with expenses to implement conservation easements)	\$ 27,990
<b>Stewardship/Legal Defense Fund</b> (Used to monitor and legally defend conservation easements forever)	\$210,961
<b>Permanently Restricted Funds</b>	
<b>Endowment Fund</b> (Investment earnings used for general operations)	\$ 59,759
<b>Other (i.e, fixed assets)</b>	\$ 16,094
<b>Total</b>	<b>\$401,141</b>

### Where Our Support Came From for General Operations



### What We Did With That Support (and an additional \$508,082 received in conservation project grants)

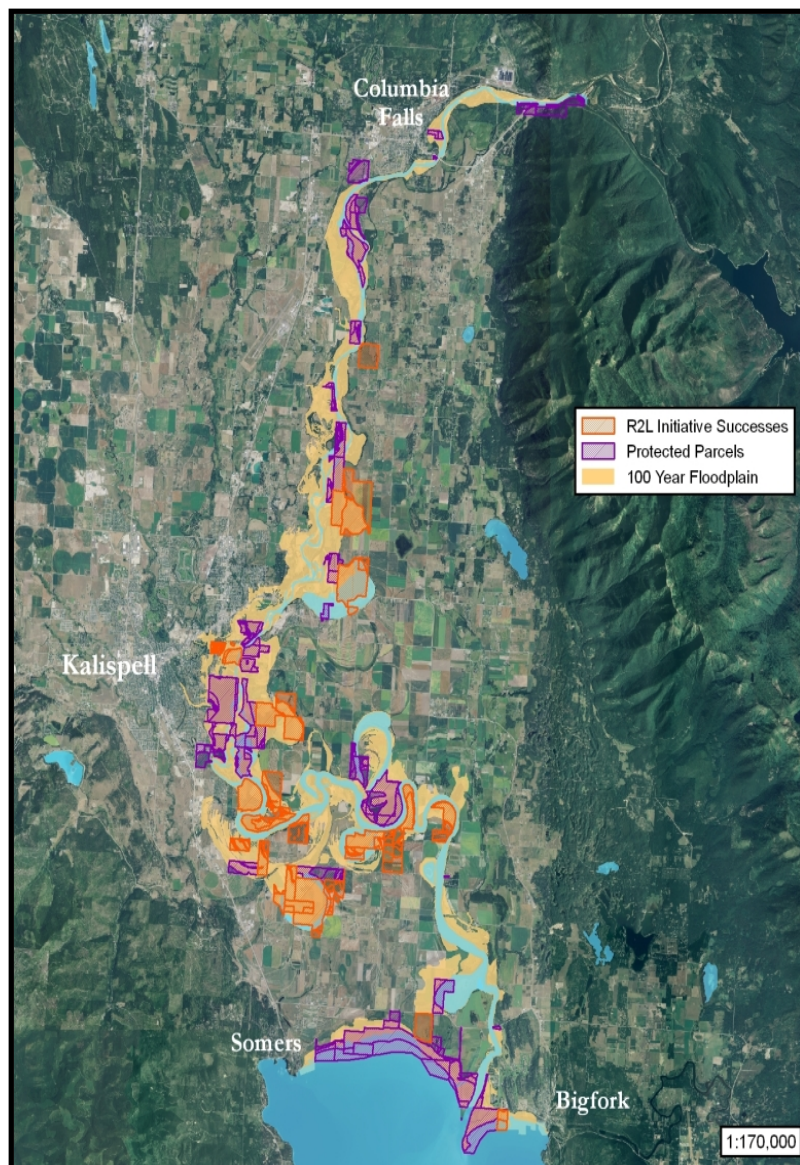




## Flathead River to Lake Initiative – A Success Story

During the past 10 years, Flathead Land Trust has been a major partner in the *Flathead River to Lake Initiative*, a collaborative effort to conserve the Flathead River and Flathead Lake. Flathead Land Trust along with its *Flathead River to Lake Initiative* partners have been successful in conserving nearly 5,000 acres of critical lands adding to a network totaling nearly 11,000 acres of protected private and public lands along the Flathead River and north shore of Flathead Lake. These critical lands include quality riparian areas, open space in the floodplain, and wetlands that are necessary for healthy river function, reducing future damage by flood waters, and naturally filtering our water to keep it clean. These lands also contain important fish and wildlife habitat and some of our nation's richest soils.

The *Flathead River to Lake Initiative* partners wanted to quantify how the land conserved has protected our critical natural resources that contribute to our high quality of life in the Flathead. In 2012, an analysis was completed to determine how well the existing network of protected critical areas (protected parcels on map) along with the lands conserved by the *Flathead River to Lake Initiative* (R2L Initiative Successes on map) accomplished this task. The results showed that because of the private land conservation by the *Flathead River to Lake Initiative*, a good proportion of the critical areas needed to maintain our excellent water quality, healthy river function, abundant fish and wildlife, and important agricultural soils are now protected.



**Thank you supporters and partners – you have helped create this network of protected lands in the focus area of the *Flathead River to Lake Initiative* that successfully safeguards:**

- 41% of the 100-year floodplain,
- 29% of the banks along of the Flathead River,
- 43% of the lands overlying shallow groundwater,
- 51% of the wetlands,
- 27% of the buffers to sloughs,
- 49% of the high quality riparian areas, and
- 34% of the important agricultural soils.

# THANKS TO OUR SUPPORTERS IN 2012!

## Grantors and Foundations

### **\$25,000+**

The Sustainability Fund of the  
Flathead Community Foundation

### **\$10,000-\$25,000**

AGL Foundation  
The Bibler Foundation  
SahanDaywi Foundation  
Turner Foundation

### **\$5,000-\$10,000**

The Cinnabar Foundation  
Ila B. Dousman Fund

### **Up to \$5,000**

Cadeau Foundation  
The Carlson Charitable Fund  
Heart of the Rockies Initiative  
Wilburforce Foundation  
James and Wanda Hollensteiner  
Foundation  
Plum Creek Foundation  
Kramer Family Fund of the Whitefish  
Community Foundation

## Business Members

### **\$500+**

D.A. Davidson  
Glacier Bank  
Mediation Services  
Montana Academy

### **\$250-\$500**

Bruce Boody Landscape Architect  
Eisinger Auto Group  
Fraser Management and Consulting  
Freedom Bank  
Insty Prints  
Johnson Ranch  
Johnson, Berg, McEvoy, & Bostock  
Knife River  
Law Office of Diane Conradi  
Lion Mountain, Inc.  
Re/Max Mountain View  
Snappy Sport Senter  
Stanley Steam & Boiler  
Western Stone  
Wheaton's

### **Up to \$250**

Newman, Roger K. DDS  
Northwestern Energy

## Tribute Gift

Bill and Sarah Dakin for Ken Siderius

## Individual Members

### **\$1,000+**

Anonymous (2)  
Dakin, Bill and Sarah  
Gordon, Richard and Cheryl  
Watkins  
Gratch, Alan and Sallie  
Hauth, Don  
Kuhl, Kendra Pannell  
Kuhn, Walter and Nancy  
Peterson, Eugene and Janice  
Regnier, Jim and Linda  
Schleicher, Richard and Joan  
Scott, James and Christine  
Weber, Kyle and Susan  
Young, Alison

### **\$500-\$1,000**

Anonymous (1)  
Binger, Ben and Anne  
Garner, Mary and Don  
Hildner, Richard and Suzanne  
Meislik, Rhona and Jerry  
Nedom, Woody  
Neff, Samuel and Ruth  
Siderius, Ken and Cathy Malarchick  
Zimet, Andrew, and Linda Farmer

### **\$250-\$500**

Anonymous (1)  
Blackler, Edwin and Janet  
Blank, D. Linnell  
Case, Patricia and John  
Chase, Lavinia and Edith Springer  
Chustz, Bubba and Leta  
Connolly, Steve and Gerry  
Davenport, Jill and Jim Goetz  
Fischer, Dan and Kristi  
Kuhl, Richard and Marylane  
McLean, Diane and Mike  
Morrow, Janet  
Olson, Dan and Jeanne  
Sherman, Roger and Sue  
Siderius, Richard and Joan  
Thomson, Muffie and Jack

### **\$100-\$250**

Anonymous (1)  
Bengtson, Tom and Sharon  
Bissell, Gael, and Rick Mace  
Blake, Cameron, and Sandy Gray  
Brenneman, Joe and Nancy Pensa  
Brosten, Jerry and Aileen  
Busse, Ryan and Sara  
Casey, Dan and Susannah  
Cohn, Margaret and Norman  
Conner, Mike and Diane  
Conradi, Diane, and Steve Braun  
Cummings, David and Dawn  
Cummings, Steve and Sue  
DeBartolo, Edward  
Dores, Michael and Jordonna  
Downey, Dave and Janet  
Engdahl, Debra and Anders  
Gangemi, John  
Gibson, Hi and Mary  
Hardey, Becky  
Heine, Dave  
Hulet, Susie and Elliot  
Illi, Warren and JoAnn  
Issel, Trish and Chuck  
Johnson, Connie and George Losleben  
Johnson, Erika, and David Sandler  
Katzman, Laura and Chris Downs  
Leander, Peter and Tana  
Little, Dr. Tom and Gerene  
Long, Ben, and Karen Nichols  
Longhart, Fred  
Lopp, Bob  
Lundgren, Diane and Bill  
MacKenzie, Jim and Norma  
McClelland, Pat and Riley  
Mendelsohn, Joe  
Mumma, Harley, and Nancy Hyde  
Nelson, Douglas and Barbara  
O'Neil, Robert, and Bobbie Truckner  
Reynolds, Marilyn and Bruce Harris  
Rolfing, Steve and Sue

### **\$100-\$250 (continued)**

Schroeter, Sun and Franklin  
Schwennesen, Rose and Don  
Seabough, Liz and Rusby  
Siderius, Charles and Jenny Lou  
Sirucek, Dean  
Sloan, Virginia  
Slovak, David  
Smiley, Doc and Terri  
Snow, Don and Phyllis  
Sorensen, Jerry  
Sowerwine, Haydi, and Owen David  
Svenningsen, Mark and Nancy  
Tannehill, Bruce and Gail Cleveland  
Thompson, Art and Diane  
Trodrick, Justin  
VanDenburgh, John and Kristen  
Vranish, Dr. Loren and Sherry  
Watkins, Tedrowe and Jill

### **Up to \$100**

Amundson, Arvin and Cheryl  
Asebrook, Jennifer and Richard Menicke  
Baird, Bill and Margaret  
Bangeman, Joanna  
Blickenstaff, Rebecca and Robert  
Blood, Lex and Judith Pressmar  
Boyle, Gene and Barbara  
Breen, Bill  
Brett, Lynne and Angel Rosario  
Britton, Kathryn  
Brown, Patricia and Ralph  
Byrd, Chris and Maureen  
Byrd, Gerard and Loretta  
Carver, Gary  
Chase, Victory and Ted  
Clark, Allan and Phyllis  
Cohen, Connie  
Cox, Judy and Bill  
Craig, George  
Daly, Carol  
DeGrosky, Tami and Mike  
Divoky, Dennis and Terry  
Dramer, Greg and JoAnn  
Ertel, Larry and Linda  
Evans, Dave and Sue  
Flint, Fred  
Fredenberg, Linda and Wade  
Friedman, Marshall and Kathryn  
Galvin, Mike and Cindy  
Galloway, Gail and Scott  
Gardner, Mary Jo  
Gniadek, Steve  
Gresham, Nancy  
Hadden, David

### **Up to \$100 (continued)**

Harris, Lee  
Havens, Gary and Lynn  
Hayden, Brace and Kathleen  
How, Susan  
Hunter, Ryan and Eve  
Hutchison, Alice  
Jones, Bill and Ann  
Jones, David and Jean  
Karas, Jane  
Katzman, Bonnie  
Knotek, W. Ladd  
Kones, Mike and Sandy  
Lackey, Jim and Launa  
Levitt, Nina and Stuart  
Long, Dallas and Suzanne  
MacLaren, Gayle and Scotty  
Makman, Stanley and Elizabeth  
Matelich, Ron and Swithin McGrath  
McCormick, Sue and Greg  
McDevitt, Cathryn  
McDyre, Shawn  
McIntyre, Valerie  
O'Neil, Carle F.  
Ottey, Mark and Connie  
Pilling, Helen  
Potter, Jack and Rachel  
Quinn, Caeli and Denny Gignoux  
Quint, Alan and Christine  
Robbins, Dean  
Robbins, Erick and Jennifer  
Rothfuss, Ed and Marge  
Sanders, Patricia  
Saunders, Peter and Cary  
Sellars, Robert and Edith  
Steinkraus, Robin  
Stephenson, Howard  
Sullivan, Dia  
Tacke, Dawn  
Tempel, Kris  
Thompson, Steve  
Valentine, Connie  
VanArtsdale, Denise and Mark  
Vignere, Joel  
von der Pahlen, Maria Constanza  
Weinberg, Dan  
Williams, Chuck and Karen  
Woodruff, Nancy  
Yenne, Gerald and JoLynn  
Yurchak, Nancy

## Stewardship Contributions

Anonymous (1)  
Valerie Beebe





Thanks to those who participated in tours and events in 2013!



Smith Lake and West Valley Bird Watching Tour  
May 2013



Major Donor  
Appreciation  
Event  
Diamond B  
Ranch  
June 2013



Hike on Lupfer Trail  
July 2013

[WWW.FLATHEADLANDTRUST.ORG](http://WWW.FLATHEADLANDTRUST.ORG) 406-752-8293 Visit us on Facebook!